



Maryport Marina

2022



GOLD ANCHOR





Welcome to Maryport Marina

A small friendly 190 Berth Marina on the West Cumbrian Coast with views of the Solway Firth



Maryport Harbour & Marina Limited

Maryport Marina, Marine Rd, Maryport, Cumbria, CA15 8AY

01900 814431 - Enquiries@maryportmarina.com

www.maryportmarina.co.uk

Berth Holder Benefits

- | | |
|-----------------------------------|--|
| Free On-Site Car Parking | Free Yearly Booklet |
| Free Pump Out Facility | Free Monthly Payment Options |
| Free Wi-Fi | No Additional Charges for Residential Berths |
| Free Slipway Usage | No additional charge for wide beam vessels. |
| Free 6 months Storage Ashore | |
| Free Splicing with rope purchased | |
| Free Fender Inflation | |

Welcome

If you are reading this brochure for the first time, thank you for considering and/or choosing to look at Maryport Marina. We hope the brochure gives you a sense of how friendly and supportive the berth holders and staff are to everyone.

The Marina staff both operationally and front of house have changed totally since 2020, and although the majority are new to the marine industry, we have all strived to give a good service, which hopefully has been evident to all. We would like to thank our existing customers for their support and understanding over the transition period. We company continues to aim to offer new and existing customers a well maintained, clean and safe environment for mooring your boat on the Cumbrian Coast.

It was a pleasure to see the marina busy and active in 2021. The yachting association ran a few social events and cruising in company visits to other marinas in the area. The private Facebook page 'Maryport Berth Holders Group' has grown in popularity and offers communication, such as marine news, stories of interest and opportunities to meet and sail together. As a company offering leisure facilities for pleasure boats, it is delightful to see berth holder's being friendly and helpful to each other, and especially to the less experienced sailor or people new to boating.

New for 2022 an onsite café. We have agreed terms to lease the commercial kitchen and lounge area. This will be an exciting venture and we hope that everyone will support them in making this a success.

Any suggestion or comments are very well welcome, these can be emailed or written down and dropped into reception for consideration at the next team meeting. We would like to take the opportunity to wish everyone a successful boating season for 2022.

Pauline Gorley *CMM (Certificated Marina Manager)*
General Manager



Maryport Harbour & Marina is a member of the Yacht Harbour Association and holds 4 Gold Anchor Status, the only Gold Anchor Marina on the Cumbrian Coast

Maryport Marina

Maryport Marina is an independent marina situated on the Cumbrian Coast. The Solway Firth has fantastic views of Scotland to the West and the lake district hills to the East. The sailing ground encompasses the Isle of Man, Scotland and North West England.

Marina Facilities

Our Marina is the ideal place to berth your boat this season as we offer:

- Serviced Pontoon Berths
- 6 Months Free Hardstanding Storage, Summer or Winter
- CCTV System
- 24 Hour Pedestrian Security System
- Slipway Hoist
- Fuel Berth
- Pump Out Facility
- Bottled Gas Sales
- On-site Sales of Boating Essentials
- 24 Hour Toilet & Showers
- Laundry Facilities
- Refrigerator & Microwave for customer use
- Free use of Slipway
- Life Jacket Servicing Point from Sea Safe Systems

Our staff strive to offer the best customer service. These services include offering assistance to customers when leaving and returning to their mooring, checking mooring lines daily (especially prior to and after storms), adding additional mooring lines when required, checking electricity meters and adding credit when required, contacting customers when there is a problem with the boat and offering a friendly cheerful greeting to everyone.

Vessels in Maryport Marina have access to water and electricity on our pontoons. All of our pontoons have cast, quality cleats and 3 Ton cleats are available on some berths for larger vessels up to 20m for short stays. Wi-Fi access is available to berth holders and visitors and can be obtained by getting a password from the marina office.

Marina Facilities

Marina Office

The marina office is open 09:00 to 17:00, Monday to Friday. and during the summer months, 11:00 to 17:00 Saturday and Sunday.

Our office staff are able to help face to face in reception, over the telephone during office hours or by email, which we will respond to as soon as possible.

The operational staff are on site 08:00 to 20:00 (22:00 in summer), and 3 hours either side of high tide during the night, they can be contacted on VHF Channel 12, call sign, 'Maryport Marina,' or on 07508 544316. Please note they may be busy opening or closing the marina flap gate and will be able to assist you when they are available.

Marina Access / Security

Access is by a security fob, the pedestrian gate will open and close automatically when a fob is used. Fobs should not be given to family or friends and are not transferable between vessels or their owners. A £10.00 refundable deposit is required per security fob. Any fobs lost or not returned within 7 days of leaving the marina will be cancelled and the deposit will be lost.

Access for road vehicles is through the main gate or via our gate on West Road, and can be opened by our operational staff on request.

Online Account Access

We are able to offer you online access to view and edit your account, as well as view your boat details, any outstanding invoices and payments made to us to give you greater control over the charges for your boat.

The system uses the highest level of security to allow you to pay your invoices by debit or credit card. You can store your card details in our 'Card Vault,' meaning it is the quickest way to pay your invoices.

To register your online account go to www.maryportmarina.co.uk/Pay and enter your registration token which can be found on the bottom of an invoice or statement from us, or alternatively by contacting the marina office.



Marina Information

Toilets & Showers

We have toilet and shower facilities for our berth holders and visitors, which are cleaned regularly throughout the day and night. Access is by your security fob which allows you access 24 hours a day. We have a separate disabled toilet and shower facility with a wet room shower and bath.

Trolleys

Trolleys are provided for the use of all customers and are parked against the marina fence by the pedestrian entrance. Please return the trolleys after use and do not leave on the pontoons when not in use.

Car Parking

Free on site car parking is available on site, by providing your registration number to reception to obtain a virtual permit. All parking is at the owners risk.

Our car park is monitored by ANPR (Automatic Number Plate Recognition) cameras, therefore it is vital you register any vehicles or tell us of any changes.

Bicycles

We have a bike stand within the marina, please do not leave bikes chained to any fence or gate, as we reserve the right to remove any bicycles that cause obstruction. No Bikes, Skateboards or roller skates are to be used on the pontoons.

Electricity

We have 240 volt AC electricity on most of our berths, pontoon electricity can be purchased using our programmable smart cards, which can be loaded with any amount of credit, a £3.00 refundable deposit is required.

Our hardstanding electricity meters use a traditional paper card, which can be bought in £1, £5 or £10 denominations. 110 volt electricity is available on some bollards.

Laundry

Our Laundry room is open 24 hours a day and has 2 washing machines and 2 driers, and an iron available for your use. These machines take £1 or 20p coins.

Refrigerator & Microwave

In our laundry room a Refrigerator and Microwave for our berth holders and visitors.

Boat Keys

We have a facility to hold boat keys at the owners request for emergency access if required. We will not issue any keys to 3rd parties unless prior written agreement has been sent to the office Any contractors must sign in with Reception to gain access to marina whether they have keys or not. |

Internet Access

We have free WiFi within the marina building and some pontoon berths, please contact the marina office for further details and the password if required.

Pets

Pets are welcome here at Maryport Marina, however we ask that dogs are kept on leads and are not allowed to foul the pontoons or marina grounds. We have ample open green spaces surrounding the marina to exercise your pet.

Maryport Marina Water Access

The water access to Maryport Marina is via a flap gate, whilst open the gate sits under the water on a concrete sill. The gate is operated manually when the water level is registering 2.4 metres above the concrete sill.

The Concrete sill is 3.1m above chart datum, this allows the gate to open between 4 to 5 hours per tide.

All vessels are requested to call prior to any boat movements on channel 12, call sign 'Maryport Marina.' We operate a traffic light system at the entrance when 3 Red lights are shown, do not approach the entrance, but contact the marina staff using VHF, 01900 814431 or mobile, 07508 544316.

During stormy conditions with a swell of 500mm, the gate will not open. Whilst the gate is shut, water flows over the marina gate, causing rough conditions close to the marina entrance, on Pontoon 'E,' or 'F.'

Winter

Please take care during cold and icy conditions. The access ramp is salted on a regular basis, however salt is available to customers who would like to salt their pontoon.



Maryport is situated on the Cumbrian Coast with view of the Lake District fells to the east and the Solway Firth and Scottish Fells in the West



Marina Berthing Prices

Annual Berthing Licences

12 Month Pontoon Licence £200.00 per metre
A twelve month pontoon licence agreement that allows berthing on a pontoon berth with a maximum of 6 months of hard standing storage ashore. Early termination is subject to our cancellation policy.

12 Month Hardstanding Licence £265.00 per metre
A twelve months storage ashore licence that allows 12 months on the hardstanding only, early termination is subject to our cancellation policy.

12 Month Discounted Berth (A & E Pontoon) £828.00 per annum
Pontoon licence for the South side of A or E pontoon, these are for boats under 6.5m & 7.5m respectively. There is no electricity or access to the lounge or shower facilities. This licence does not include storage ashore and cannot be pro-rata of the year.

Six Month Berthing Licences

Summer 6 Month Licence £125.00 per metre
6 months between 1st April & 30th September.

Winter 6 Month Licence £115.00 per metre
6 months between 1st October & 31st March.

Short Term Berthing

1 Calendar Month £23.00 per metre
Any calendar month during the year.

Leisure Visitor Berthing from £1.95 per metre
Up to 24 hours berthing for a pontoon berth or handstanding ashore.



Service Prices

Lift Package 1 for non supported vessels £33.00 per metre
To lift a boat that requires minimal support out of the marina, pressure wash, set down and launch at a future date or vice versa.

Lift Package 2 for supported Vessels £35.00 per metre
To lift a boat out of the marina, pressure wash, chock/prop and launch at a future date or vice versa. For Long, Fin or Planing Boats.

Vessel Launch from Land £19.00 per metre
One way lift to launch a boat, this does not include any pressure washing, any additional work will be charged.

Vessel Lift Out of Water £24.00 per metre
One way lift to lift a boat out of the water, this does not include any pressure washing, or chocking, any additional work will be charged.

Jib Crane Usage £55.00 per half hour
Jib crane usage for mast lift per half hour for 1 operator. It doesn't include any staff stepping or unstepping the mast.

Additional Services

Pressure Washer usage including 1 operator £30.00 per hour
Machine Usage for any machine (Pressure Washer etc.) including one operator per hour (minimum charge of 1 hour applies).

Tow to or from Berth or Slipway £3.50 per metre
Tow boat from berth to slipway or vice versa (minimum charge of £30.00 per tow applies) This is a side by side tow with the marina dory or pulled manually from one place to another.

Trailer /Cradle Storage £135.00 per annum or £20 per month
Storage of a trailer or dismantled cradle on site, these must be labelled with your boat name for easy identification.

Small Item Storage Bin £70.00 per annum or £8.00 per month
Storage of small items in our customer container, one unit consists of 2 x 1 metre shelves. We have a limited number of units available.

The marina office can quote you for any of our berthing or servicing options, give them a call or email to discuss your requirements



Our Slipway Hoist is operated by the operational team, who provide lifting services, pressure washing, and other services, 5 days a week.

Boat Services

Fuel Berth

Marine Diesel is available on the fuel berth at the end of Pontoon A, please contact the duty operational staff to arrange for dispensing of the fuel. As a registered dealer, we require a declaration to be signed for each supply. You are able to declare any split of heating & Lighting in 10% increments from 0% to 100%, we recommend a split of 60% - 40%.

When refuelling please observe the rules to ensure for safe fuel transfer:



No Smoking/ Naked Flames



No Mobile Phones/VHF's



Switch Off Engines

All refuelling must take place alongside our fuel berth.

Pump Out Facility

We have a free pump out facility for all berth holders and visitors, please speak to our operational staff. Please avoid pumping out or disposing of waste in the Marina and outer harbour area.

Water Connections

Water stands are available on each pontoon and on the hardstanding area. The taps are screw connectors and require your own hose. Please do not leave hose attached.

Rope Sales

We sell a range of rope for every need, such as braid on braid, 3 strand, floating rope, and shock cord. We also sell fenders, whipping twine, oil spill pads, shackles, boat cleaner and a range of other boating essentials. A free rope splicing service is available for rope bought from us and fender inflation if required.

Weather

We display the weather forecast in the noticeboard at the marina entrance for your use, please ask the office staff if you would like a copy. A detailed forecast can be found online at XC Weather.

Slipway

The marina slipway is available for use by berth holders, the slipway is used by our slipway hoist and our tenant in the boat repair facility. It is advisable to call ahead to check availability of the slipway by calling the marina office.

Speed

The Harbour Authority have a 4 knot dead slow speed limit. Please ensure you are not creating excessive wash within the marina.

VHF

We recommend all boat users carry and use a handheld VHF radio as a minimum. It is essential that you contact 'Maryport Marina,' before all boat movements on Ch12.

Hardstanding Storage

The hardstanding area is available for storage and minor maintenance of your vessel, Motor Vehicles are only allowed for loading and offloading heavy equipment. Trailers or boxes to be used as a workshop will be limited to six months and be charged at the monthly storage/berthing rate.

The removal of props, wedges or supports under your vessel is prohibited to ensure the stability of your boat, ensuring the safety of yourself, other boat owners and staff. Please familiarise yourself with the marina rules for the hardstanding storage area for your own and others safety.

The operational staff take pride in ensuring the site is free from rubbish and debris, please help them by removing any waste, paint tins, brushes, rollers rags, fixings or wood etc. in the hedges or under your boat. Please do not secure anything to our fence, to protect the security fencing.



Slipway Hoist

Our self-powered slipway hoist is operated by our trained operational staff Monday - Friday. Our staff may consider lifting your vessel at weekends, please contact us in plenty of time to organise.

The maximum lifting limits for our hoist is as follows:

- Maximum weight of 12 tonne per sling
- Beam of 4.6 Metres
- Draught will vary depending on hull configuration, maximum practical depth of the hoist is 2.6 metres.

Our slipway hoist has a Jib Crane, which can lift up to 1 tonne, or 750Kg fully extended for lifting masts and other items.

All lifting services are booked for a given time however these can change if the weather or tidal conditions are not suitable, and therefore may need to be rearranged at short notice.

Please remove any sails from your mast prior to your boat being lifted as this may cause the vessel to become unstable during stormy conditions.

To Book any services please contact the marina office in the first instance, where we will be able to book you in and quote you a price meeting your requirements.

Be part of the Antifouling Initiative Protect, Collect & Dispose



Antifouling
paint and dust is
hazardous



Environmental Best Practice

Protect the environment

- ✓ Choose the right paint & work in a well-ventilated area
- ✓ Protect the ground and surrounding area
- ✓ Minimise paint dust by wet sanding

Collect paint debris

- ✓ Place tarpaulins under the vessel
- ✓ Use an industrial vacuum-cleaner linked to the paint scraper
- ✓ Capture old paint with 'paste-and-peel' techniques

Dispose of waste

- ✓ Clean up and dispose of all hazardous waste correctly

For more
information
visit:

www.thegreenblue.org.uk

www.tyha.co.uk

www.safeantifouling.com

Don't forget Personal Protective Equipment (PPE)



Environment

Here at Maryport Harbour and Marina Ltd., we take all precautions to protect the environment from unnecessary harm. Please take time to read the following guidance.

Waste Facilities

We provide facilities ashore for general household waste, recycling of glass, plastics, tin cans, and paper/ card.



We also have waste facilities for waste oil, batteries and scrap metal, please contact a member of staff to arrange. Any other waste can be disposed at the local public amenity around a 2 minute drive from the marina, speak to marina staff for directions.

Ensure that anti-fouling scrapings are swept up and disposed of in a safe manner, preventing contaminants from entering the water system. Where possible use products that are biodegradable, phosphate and chlorine free.

We aim to provide clean amenities, which are open 24 hours per day. Please do not use your sea toilets in the marina or harbour. A sewage pump out

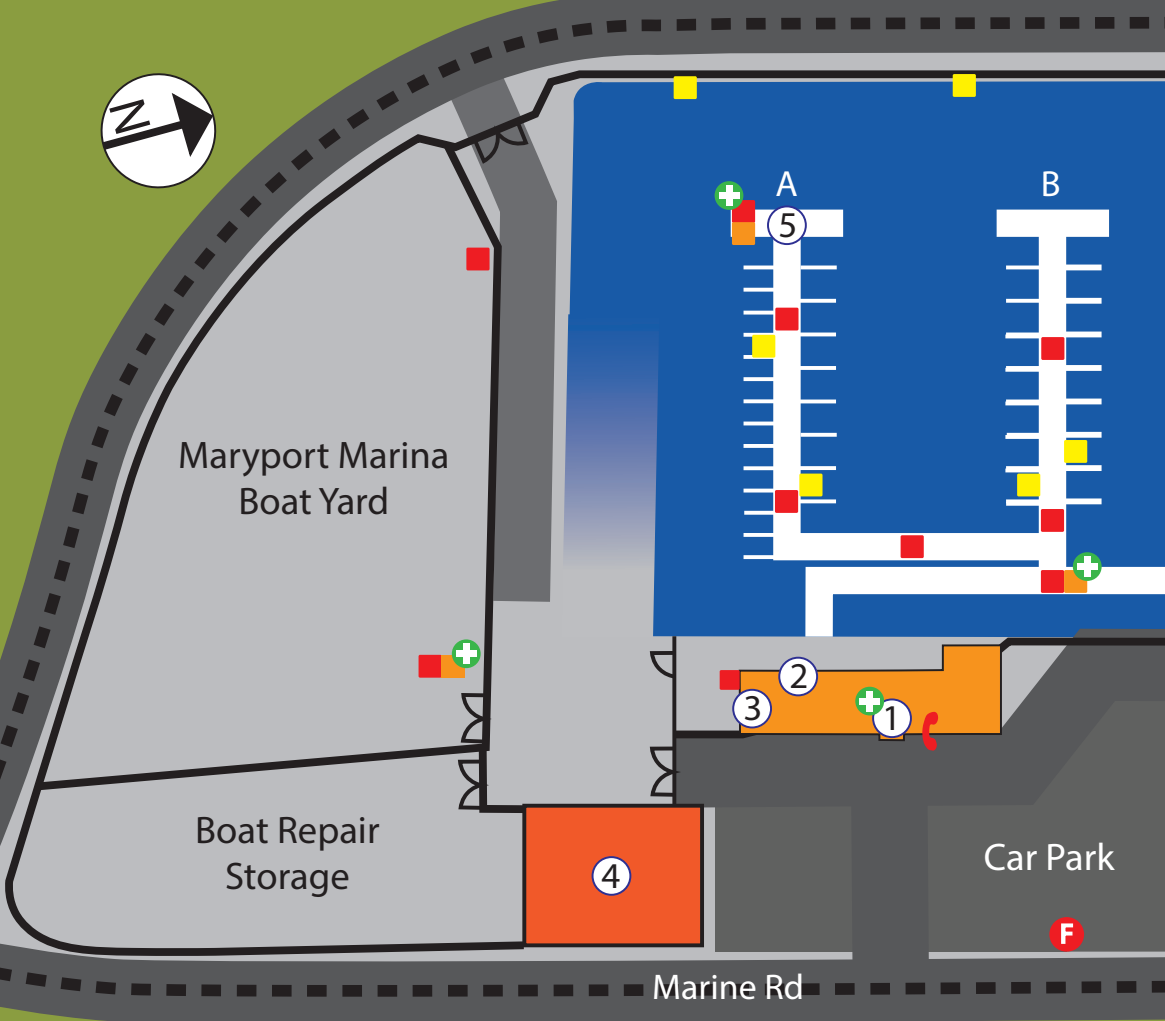
facility is available on the fuel berth on pontoon A, please speak to a member staff to operate.

Pollution

Don't be a noisy neighbour, roaring engines, flapping halyards, loud music can disturb other users of the marina and residents. We would appreciate your halyards being secured before leaving your vessel for any length of time. This also helps to reduce the wear & tear on your ropes.







Polluting the water, with fuel or oil drips can have a serious cumulative effect on the marine environment. If using portable fuel containers, please fill them away from the waters edge. Please ensure you use absorbent material under the containers to collect any spilt fuel, and do not over fill your tanks. Please ensure you dispose of all waste in a safe and appropriate manner. If you notice any pollution especially oils, please report it to marina staff as soon as possible,





Facilities:

- 1 - Reception
- 2 - Toilet/Showers
- 3 - Laundry
- 4 - Boat Repair Facility
- 5 - Fuel Berth & Pump Out
- 6 - Dock Gate

 Safety Equipment (Fire Extinguisher & Life Ring/Throwline)	 Air Horn to raise an alarm
 Safety Ladders	 First Aid Kit
	 Fire Assembly Point
	 Emergency Telephone

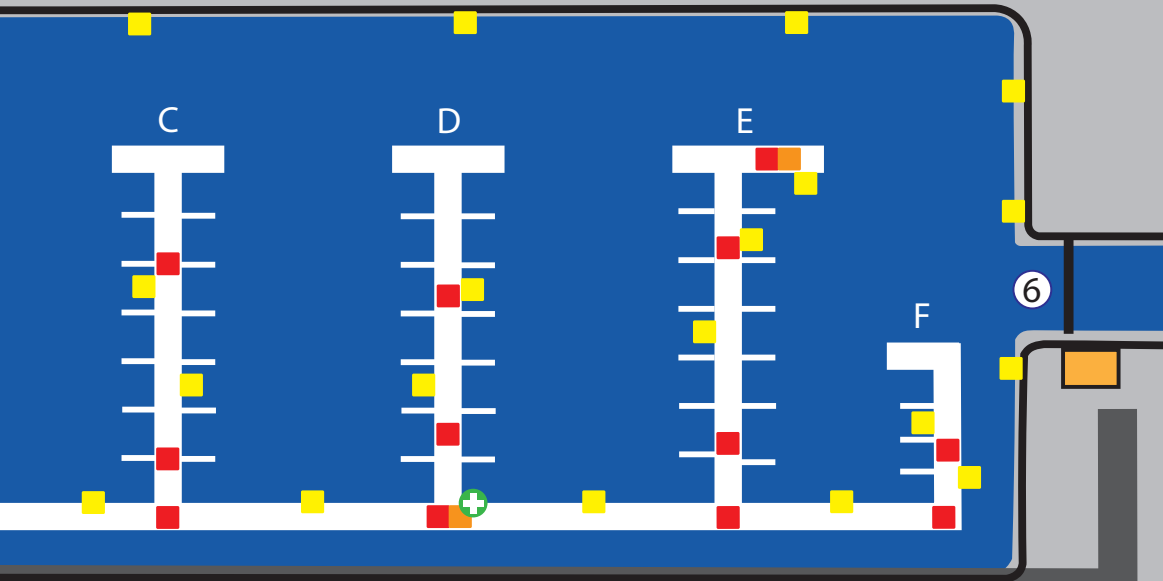
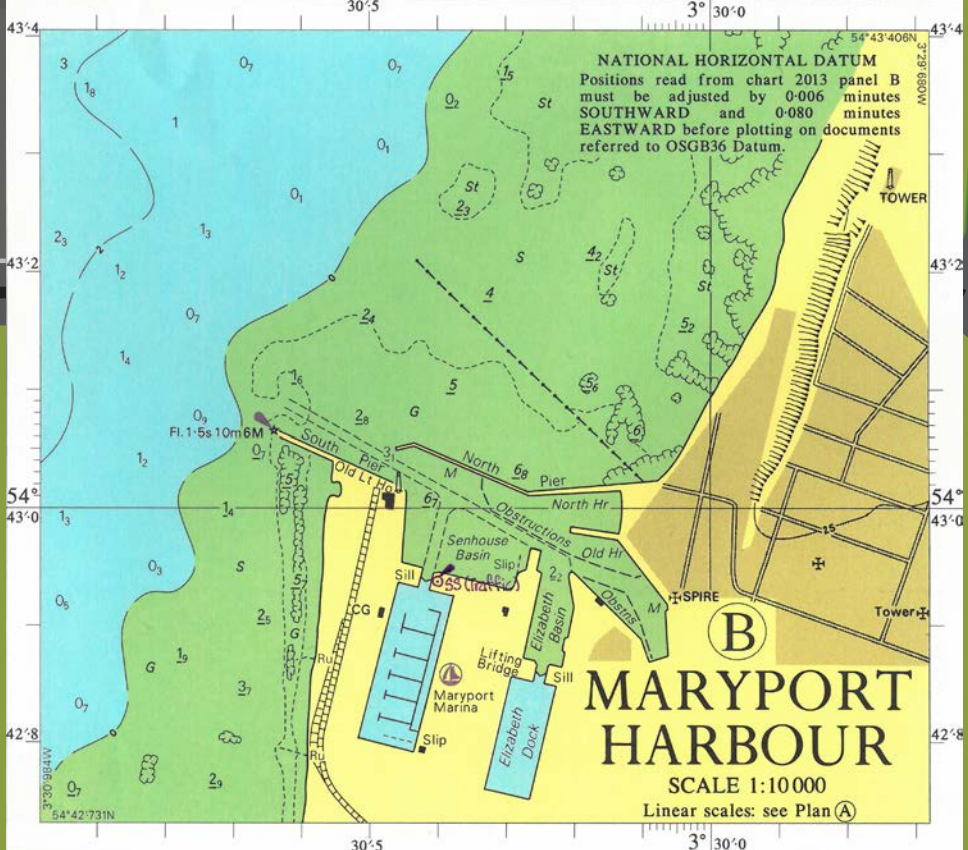


Chart not to scale, not to be used for navigation. Reprinted under licence



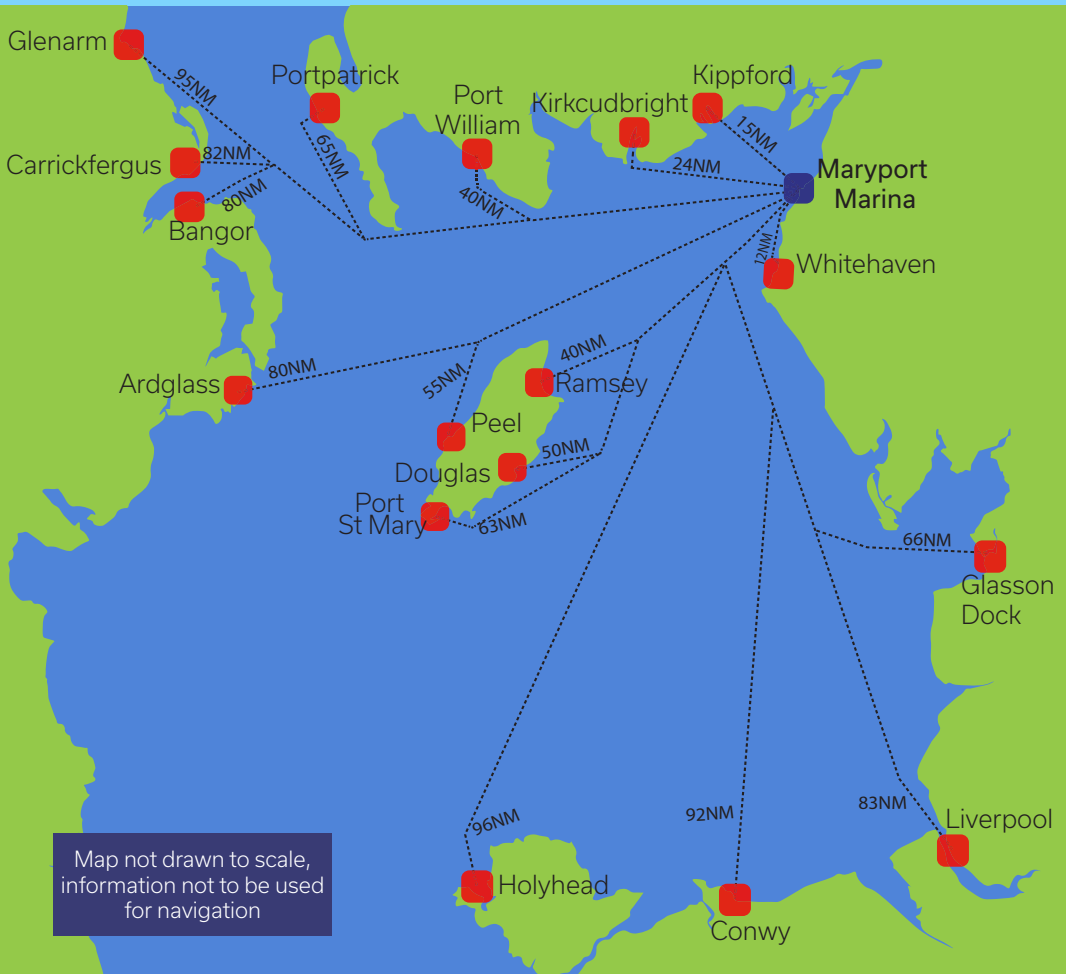
Cruising Destinations

Maryport is a great base to explore the Solway Firth and wider Irish Sea, with access to the Isle of Man, Southern Scotland, North West England and further afield, Ireland and North Wales.

A day sailing could take you across the Solway Firth to the beautiful Dumfriesshire coast to visit the towns of Kippford or Kirkcudbright, or a short sail down the West Cumbrian Coastline to Whitehaven.

For longer weekend's away, a trip to the Isle of Man, is the perfect sailing destination, either call in at the historic town of Ramsey, or Port St Mary. Peel offers visitors pontoon berths, a short distance away from the town centre.

Whether planning your day trip or your summer adventure, there is plenty of experienced sailors within Maryport who are always willing to help you plan your perfect trip.





MARYPORT YACHTING ASSOCIATION

Maryport Yachting Association (MYA) is a friendly club of sailing, motor cruising and fishing enthusiasts, and welcome members with all types of watercrafts, as such we are inviting anyone who is currently not a member to join us for the new season.

Annual membership to our club is only £15.00 per year which runs from 1st April and is extremely good value. You can look forward to events throughout the year and an equipment sharing scheme.

If you wish to become a member of our club, please Email the MYA Secretary for an application form (myasailing@gmail.com) or simply pick one up from the Marina Office.

Proposed Calendar of Events:

- January: Committee meeting to discuss and plan the coming years events
- February: Boat maintenance and preparation
- March: Boat maintenance and preparation
- April: Club sail in the Solway / Club annual AGM & BBQ
- May: Club sail to the TT races on the Isle of Man
- June: MYA cruise / Trawler Race: members support with flags flying & BBQ / Fundraiser for MIRB and sale of surplus boaty items.
- July: Fun day / Club Sail & BBQ
- August: Friendship race Whitehaven / Kirkcubright Tattoo
- September: Club sail & BBQ
- October: Club sail and laying up supper with BBQ and quiz
- November: Evening supper, quiz and chat
- December: Christmas Party

This is a proposal of events dates and times to be confirmed early 2022

We have a Facebook page, and a WhatsApp group so that members can communicate with each other, share ideas, and get updated with activities and events.



Welcome to Maryport

Maryport has built itself a national reputation for its attractions and museums. There's more to this fishing town than meets the eye. There's a lot to do in the town and the surrounding area for history buffs, nature lovers and families looking for adventure. The history stretches back to Roman days, known then as Alauna, Maryport was one of the farthest flung outposts of the Roman Empire but strategically important because of its proximity to Hadrian's Wall.

The town of Maryport hosts many events in its calendar, including the infamous Trawler Race, an annual event which sees many of the town's fishing fleet and visitors, turn out to race the Solway Firth, followed by a prize ceremony at the Butchers Arms. A popular event for locals and tourists alike, with demonstrations from Maryport Inshore Rescue, and other emergency services. Other events include, 'Maryport Live,' a weekend dedicated to free live music in the local bars.

Maryport welcomes visitors and tourists to the small town, full of good quality restaurants, pubs and bars, along with a range of small independent shops selling everything from the essentials to DIY equipment and gift shops.



Things to Do

Explore Maryport's rich seafaring and Roman past at the Maritime Museum and Senhouse Roman Museum, learn more about the underwater world at the Lake District Coast Aquarium.

Cycle along the coastal path which stretches from Workington to Silloth, or why not take advantage of the Coast to Coast or Reivers cycle way?

Senhouse Roman Museum

Dramatically sited on cliffs overlooking the Solway Firth. It contains the largest collection of Roman altars from a single site in the UK. Fun and educational for adults and children the museum also has events running throughout the year. For details go to: www.senhousemuseum.co.uk



The Lake District Coast Aquarium

A wonderful opportunity for a closeup look at the creatures of the deep. There is crazy golf and a harbourside restaurant and gift shop plus the unique Shiver Me Timbers playground. Take a look at www.coastaquarium.co.uk

West Coast Karting

Cumbria's premier indoor karting centre. Come for an exciting spin. www.westcoastkarting.co.uk

The Wave Centre

The wave centre is home to Clip & Climb, a series of indoor climbing walls, Cave at the Wave, caving experience, Gym and Cafe, next to the harbour. Find out more details at: www.better.org.uk/leisure-centre/allerdale/the-wave-centre



Maryport Maritime Museum

Formerly a Victorian pub this small museum is crammed full of maritime artefacts including much information on Thomas Henry Ismay and paintings by renowned marinescape artist William Mitchell.



Marina Life

The Solway Coast area from Maryport to Rockcliffe in the north was designated in 1964 as a Area of Outstanding Natural Beauty. The area covers about 115 square kilometers of the Solway Plain and its primary purpose is to conserve and enhance the natural beauty.

Maryport also has a Site of Special Scientific Interest (SSSI), Which is located on the grass bank adjacent to the marina, and has a variety of grasses, with two Cumbrian rarities' the Common Broomrape and the Pyramidal Orchid. The SSSI extends round to the east of the harbour ending at the road known as Irish Street. This sheltered land includes species such as Rest-Harrow, Common Knapweed, Kidney Vetch, Wild Carrot, Wild Mignonette, Yellow Rattle and Yarrow.



The Yarrow is present throughout the area and it is upon this plant the nationally rare Purple Broomrape is parasitic. Maryport is the most northern known site for this species, which otherwise is a southern plant.

The Site is also important for the Small Blue Butterfly due to the abundance of its food plant, the Kidney Vetch. The small blue has suffered a decline in several parts of the country and in Cumbria is restricted to 3 sites.



The marina is full of wildlife, including Swans, Seals, Otters, King Fishers, a variety of birds and fish, and one that everyone loves to watch in the summer months is Mullet.



Lifeboats

I am your Lifejacket

When we are near the water,
I will make you feel safe.
And when we are in the water,
I will keep you alive.
I will stop you from panicking.
I will keep you afloat.
Even in rough weather.
Even if you are unconscious,
I will support and protect you
Until help arrives.
All this I will do for you
If you do two things for me
Look after me and put me on.

**USELESS
UNLESS
WORN**



The RNLI is the charity that saves lives at sea

Royal National Lifeboat Institution, a charity registered in England and Wales (209603), Scotland (SC037736), the Republic of Ireland (20003326), the Bailiwick of Jersey (14), the Isle of Man, the Bailiwick of Guernsey and Alderney

Health & Safety

Maryport Harbour and Marina Limited in conjunction with the Harbour Authority takes its duty under the Health and Safety at Work Act 1974 etc, very seriously. Our aim is to provide a safe working environment for all its staff, customers and visitors alike. Therefore, we ask all our customers and visitors to adhere to the company's' recommendations, guidance and direction, to ensure the safety of all persons and property, whilst enjoying their leisure time.

In addition to the HSE regulations, the Maritime and Coastguard Agency has powers for all marine activities under the Coastguard Act 1924, Merchant Shipping Act 1995 and Maritime Security Act 1997. The MCA requests that all Harbours, terminals, Marinas, etc. adhere to the Port Marine Safety Code.

HSE Inspectors work in conjunction with the Marine Accident Investigation Branch (MAIB), both organisations have the authority to investigate incidents. Generally, the HSE will pass any marine incidents to the MAIB for investigation, reporting and recommendations.

We request that all persons coming to site familiarise themselves with the safety equipment around the site, especially the pontoon system. There is a plan of the site showing the locations of safety ladders, fire extinguishers, life rings or throw lines,

first aid kits, etc. These are located at the entrance of the pedestrian gate to the site, the entrance of the pontoon system and a small plan in this booklet.

Private individuals carrying out minor works or maintenance on their boats will generally create only minor risks to themselves. However, when our staff become aware that boat owners are putting themselves or others at unnecessary risk, our staff will approach the individuals and inform them that these works are not acceptable.

Persons other than boat owners, i.e. Individuals, companies, and/or sole traders undertaking work on the site, boats, and property will be required to complete a 'Control and Permission of Third-Party Access' form. If this is not completed appropriately, we reserve the right to refuse entry. We have a system for contractors to have an annual review, please speak to the management team for further information.

Friends, visitors and contractors must sign in at reception prior to entering the site, this information is required as part of our emergency planning. Anyone found on site who hasn't signed in at reception will be asked to leave the site.

We appreciate your co-operation to ensure our site is safe and secure for everyone.

Accident Reporting

As part of the Health and Safety, it is important for our statistics that accidents and/or near misses are reported as soon as practicable. The staff will complete or provide a form for you to complete and hand back into the office. It is important that you provide as much detail as possible to enable us to act, where necessary.

Life Jackets or Buoyancy Aids

Children, youths or vulnerable people should always be accompanied by an adult whilst on site, especially the pontoon system and boat storage area. Whilst on the pontoon system, buoyancy aids or lifejackets should be worn by children, youths and non-swimmers. During periods of inclement weather, it is recommended that all person use a buoyancy aid or life jacket.

Mooring

Moorings should be clear of debris, dinghies or tenders. Trolleys should be emptied and returned to the patio area as soon as possible, for other customers. It is recommended that boats should have a stern, bow and spring line to the pontoon system. Mooring lines should not cross to another berth, as this prevents the berth being used and creates a hazard, especially at night-time if we have visiting boats.

Boat Yard

Beware that plant and machinery operate in and around the boat yard. It is recommended that all person's keep a safe distance from machinery and wait until the operator has completed their manoeuvres or operation before approaching. Adhere to the safety signage around the site and keep to the designated footpaths.

Trips, Slips and Falls

We ask that particular care, is taken on the pontoons system during icy or wet weather, as it may be slippery at these times. Avoid running or jumping on the pontoons as this causes a springboard effect. We ask that appropriate footwear is always worn around the pontoon system and especially on the hard-standing storage area, where it is very industrial. Everyone has a duty of care to prevent a hazard, please ensure you do not cause a trip, slip or fall.



Health & Safety

Electricity

We have electricity bollards on the pontoon system and around the perimeter of the hard standing. The bollards have two 240 volt 16-amp sockets, with some of the bollards on the hard standing having a 110-volt sockets. The bollards are tested annually by a competent electrical company. If you are plugging into our system, we expect your cable to be fit for purpose. Any cables or plugs that are damaged or not fit for purpose will be removed from our system. Please remember to disconnect your lead before leaving your berth. Electricity units can be purchased from the reception between 08:00 and 20:00 hours.

Carbon Monoxide Safety

Proper ventilation for engine, generator or heating exhaust must be clear. Equipment should be properly maintained and follow manufacturer's instructions for servicing. It is recommended to install a CO alarm inside your boat, and test on a regular basis.

Fire Safety

Fire extinguishers are available on the pontoons located in the red fire boxes. We recommend that minimum amounts of fuel, gas, etc. are kept on board, and always isolate fuel and gas when leaving the boat. It is advisable to fit a smoke detector and check on a regular basis. Smoking and vaping is prohibited in all marina buildings.

Fire Safety Procedure

In an emergency, raise the alarm and ensure a staff member is aware of the situation

- Call 999 (an emergency telephone is available at the front of the building)
- Clear the area of people who may be in danger, ensuring you will not be in danger. Retreat to a safe distance or gather at the fire assembly point in the car park.
- Fire extinguishers are in the red cabinets on the pontoons and around the site.
- Only tackle the incident if you are appropriately trained, and it is safe to do so.
- Do not obstruct the access routes into the marina, as the emergency services and marina staff will require access.
- If you are unable to leave the pontoons, make your way to the farthest point possible from the incident and arrangement will be made for a water evacuation.

The building fire alarm is a siren, which is tested on Monday mornings by the operational staff. Fog horns are available in a box on top of the red cabinets to help raise the alarm. There is one at the fuel berth, two on the main pontoon walkway, one on 'E' Hammerhead and one on the hard standing, We will transmit instructions on VHF Channel 12.

Maryport High Tides

	January				February				March			
	Morning		Afternoon		Morning		Afternoon		Morning		Afternoon	
	Time	M	Time	M	Time	M	Time	M	Time	M	Time	M
1	09:58	8.2	22:23	8.3	11:30	8.7	23:59	8.5	10:35	8.3	23:06	8.3
2	10:48	8.5	23:14	8.6			12:15	8.9	11:19	8.7	23:47	8.6
3	11:35	8.8			00:44	8.6	12:59	9.0	11:59	9.0		
4	00:04	8.6	12:24	8.9	01:27	8.5	13:43	8.9	00:25	8.7	12:37	9.0
5	00:55	8.6	13:14	8.9	02:09	8.2	14:23	8.6	01:02	8.6	13:15	8.9
6	01:45	8.3	14:03	8.7	02:47	7.8	15:04	8.2	01:37	8.4	13:51	8.6
7	02:34	8.0	14:53	8.3	03:26	7.4	15:46	7.6	02:10	8.1	14:26	8.2
8	03:23	7.6	15:43	7.9	04:10	6.9	16:35	7.1	02:43	7.7	15:03	7.7
9	04:14	7.1	16:36	7.5	05:03	6.5	17:36	6.5	03:21	7.2	15:45	7.1
10	05:09	6.7	17:34	7.1	06:13	6.1	18:52	6.2	04:06	6.7	16:39	6.4
11	06:13	6.5	18:39	6.8	07:36	6.1	20:11	6.2	05:08	6.1	17:56	5.9
12	07:22	6.4	19:45	6.7	08:50	6.4	21:18	6.54	06:41	5.8	19:33	5.8
13	08:27	6.5	20:46	6.8	09:43	6.9	22:07	7.0	08:11	6.1	20:53	6.2
14	09:20	6.9	21:39	7.0	10:26	7.4	22:47	7.4	09:15	6.6	21:44	6.8
15	10:04	7.2	22:23	7.3	11:01	7.8	23:21	7.8	09:59	7.2	22:23	7.3
16	10:43	7.5	23:01	7.5	11:34	8.1	23:53	8.0	10:34	7.7	22:56	7.8
17	11:17	7.8	23:36	7.7			12:05	8.3	11:08	8.1	23:27	8.2
18	11:50	8.0			00:24	8.2	12:37	8.5	11:39	8.5	23:58	8.5
19	00:09	7.8	12:23	8.1	00:58	8.4	13:12	8.6			12:11	8.7
20	00:43	7.9	12:57	8.2	01:33	8.4	13:47	8.5	00:31	8.6	12:46	8.8
21	01:19	7.9	13:32	8.1	02:11	8.2	14:24	8.4	01:07	8.6	13:22	8.8
22	01:56	7.9	14:09	8.1	02:51	8.0	15:05	8.1	01:46	8.5	14:02	8.5
23	02:36	7.7	14:48	7.9	03:35	7.6	15:54	7.7	02:27	8.2	14:45	8.1
24	03:18	7.5	15:33	7.7	04:31	7.2	16:59	7.2	03:12	7.7	15:37	7.5
25	04:07	7.3	16:25	7.5	05:47	6.8	18:30	6.8	04:11	7.1	16:48	6.9
26	05:05	7.0	17:31	7.2	07:18	6.7	20:03	6.8	05:34	6.7	18:28	6.4
27	06:18	6.9	18:50	7.1	08:37	7.1	21:19	7.3	08:09	6.6	21:03	6.6
28	07:36	6.9	20:08	7.2	09:42	7.7	22:19	7.9	09:30	7.01	22:16	7.2
29	08:46	7.3	21:18	7.49					10:32	7.6	23:08	7.7
30	09:48	7.8	22:20	7.9					11:20	8.2	23:50	8.1
31	10:42	8.3	23:12	8.3					12:00	8.5		

All tidal data is adjusted for British Summer Time and is not to be relied on for navigation.

	April				May				June			
	Morning		Afternoon		Morning		Afternoon		Morning		Afternoon	
	Time	M	Time	M	Time	M	Time	M	Time	M	Time	M
1	00:27	8.4	12:37	8.7	00:33	8.1	12:44	8.2	01:09	7.9	13:29	7.7
2	01:00	8.5	13:11	8.7	01:03	8.1	13:17	8.1	01:42	7.8	14:04	7.6
3	01:32	8.4	13:44	8.6	01:33	8.0	13:51	7.9	02:17	7.7	14:42	7.4
4	02:03	8.3	14:19	8.3	02:05	7.8	14:25	7.7	02:53	7.4	15:21	7.1
5	02:34	8.0	14:52	8.0	02:38	7.6	15:01	7.3	03:34	7.2	16:05	6.8
6	03:07	7.7	15:28	7.5	03:13	7.2	15:40	6.9	04:20	6.9	16:56	6.5
7	03:41	7.2	16:07	6.9	03:53	6.8	16:27	6.4	05:17	6.7	17:59	6.4
8	04:22	6.7	16:55	6.3	04:44	6.4	17:27	6.0	06:25	6.6	19:07	6.4
9	05:17	6.2	18:05	5.8	05:56	6.1	18:48	5.8	07:34	6.7	20:13	6.7
10	06:43	5.8	19:44	5.6	07:22	6.1	20:08	6.0	08:35	7.1	21:10	7.1
11	08:22	5.9	21:09	6.0	08:33	6.4	21:11	6.5	09:30	7.5	22:02	7.6
12	09:31	6.4	22:06	6.6	09:28	6.9	21:59	7.11	10:20	7.9	22:50	8.0
13	10:18	7.0	22:46	7.2	10:14	7.5	22:41	7.7	11:09	8.2	23:36	8.36
14	10:58	7.6	23:22	7.7	10:55	8.0	23:21	8.1	11:58	8.4		
15	11:33	8.0	23:55	8.2	11:35	8.4			00:22	8.6	12:47	8.6
16			12:08	8.4	00:00	8.5	12:16	8.6	01:09	8.7	13:38	8.5
17	00:29	8.5	12:42	8.7	00:40	8.7	12:59	8.7	01:59	8.7	14:32	8.3
18	01:04	8.7	13:20	8.8	01:22	8.7	13:46	8.6	02:53	8.5	15:29	8.0
19	01:42	8.7	14:01	8.7	02:08	8.6	14:37	8.3	03:49	8.2	16:26	7.6
20	02:24	8.5	14:46	8.4	02:59	8.3	15:32	7.9	04:48	7.9	17:26	7.2
21	03:10	8.2	15:35	7.9	03:57	7.9	16:35	7.4	05:49	7.6	18:30	6.9
22	04:01	7.7	16:34	7.3	05:03	7.5	17:47	6.9	06:54	7.3	19:36	6.8
23	05:07	7.1	17:51	6.7	06:16	7.2	19:05	6.7	07:58	7.2	20:41	6.8
24	06:30	6.7	19:25	6.4	07:32	7.1	20:21	6.8	08:58	7.1	21:37	6.9
25	07:57	6.7	20:50	6.6	08:39	7.2	21:24	7.0	09:53	7.2	22:25	7.1
26	09:10	7.1	21:56	7.1	09:36	7.4	22:15	7.3	10:40	7.3	23:07	7.4
27	10:09	7.5	22:46	7.5	10:25	7.6	22:57	7.5	11:24	7.4	23:45	7.6
28	10:56	7.9	23:26	7.8	11:07	7.77	23:33	7.7			12:02	7.5
29	11:35	8.1			11:45	7.86			00:19	7.7	12:38	7.6
30	00:01	8.0	12:11	8.2	00:06	7.86	12:20	7.89	00:53	7.8	13:13	7.6
31					00:38	7.92	12:55	7.85				

	July				August				September			
	Morning		Afternoon		Morning		Afternoon		Morning		Afternoon	
	Time	M	Time	M	Time	M	Time	M	Time	M	Time	M
1	01:26	7.8	13:49	7.6	02:18	8.0	14:41	7.8	02:58	8.2	15:24	7.9
2	02:01	7.8	14:25	7.5	02:52	8.0	15:16	7.7	03:36	8.0	16:05	7.6
3	02:38	7.7	15:03	7.4	03:28	7.9	15:55	7.5	04:21	7.6	16:55	7.2
4	03:15	7.6	15:43	7.2	04:06	7.7	16:37	7.3	05:19	7.1	18:04	6.8
5	03:56	7.4	16:26	7.1	04:52	7.5	17:29	7.1	06:43	6.6	19:37	6.6
6	04:42	7.2	17:16	6.9	05:49	7.2	18:35	6.8	08:24	6.6	21:03	6.9
7	05:34	7.1	18:13	6.8	07:04	6.9	19:54	6.8	09:48	7.0	22:12	7.5
8	06:36	7.0	19:20	6.8	08:29	6.9	21:10	7.1	10:51	7.7	23:07	8.2
9	07:46	7.1	20:27	7.0	09:46	7.2	22:17	7.5	11:41	8.2	23:53	8.7
10	08:52	7.2	21:30	7.3	10:51	7.6	23:14	8.1			12:23	8.6
11	09:55	7.5	22:27	7.8	11:47	8.1			00:35	9.0	13:02	8.7
12	10:54	7.9	23:21	8.2	00:05	8.6	12:35	8.46	01:13	9.1	13:39	8.7
13	11:49	8.2			00:51	8.9	13:21	8.6	01:52	9.0	14:16	8.47
14	00:12	8.5	12:41	8.4	01:35	9.1	14:05	8.6	02:30	8.7	14:51	8.2
15	01:00	8.7	13:32	8.5	02:20	9.0	14:48	8.4	03:07	8.3	15:26	7.8
16	01:51	8.8	14:24	8.4	03:03	8.8	15:29	8.1	03:44	7.7	16:03	7.3
17	02:42	8.8	15:14	8.2	03:44	8.3	16:08	7.6	04:26	7.1	16:48	6.7
18	03:31	8.6	16:02	7.9	04:27	7.8	16:50	7.1	05:20	6.4	17:50	6.2
19	04:21	8.2	16:51	7.5	05:14	7.2	17:41	6.7	06:37	5.9	19:24	5.9
20	05:11	7.8	17:42	7.0	06:11	6.6	18:47	6.2	08:20	5.8	20:57	6.1
21	06:06	7.3	18:40	6.7	07:28	6.2	20:11	6.1	09:41	6.2	22:00	6.7
22	07:07	6.9	19:47	6.5	08:51	6.1	21:29	6.3	10:32	6.8	22:44	7.3
23	08:14	6.6	20:55	6.5	10:03	6.4	22:27	6.8	11:10	7.3	23:20	7.7
24	09:20	6.6	21:56	6.7	10:55	6.9	23:11	7.3	11:42	7.8	23:51	8.1
25	10:19	6.8	22:46	7.0	11:34	7.3	23:47	7.7			12:12	8.1
26	11:08	7.0	23:28	7.4			12:08	7.6	00:21	8.4	12:40	8.3
27	11:49	7.3			00:19	8.0	12:38	7.9	00:51	8.6	13:11	8.5
28	00:05	7.6	12:26	7.5	00:50	8.21	13:09	8.1	01:22	8.66	13:43	8.5
29	00:38	7.8	12:58	7.67	01:20	8.35	13:40	8.17	01:56	8.6	14:19	8.4
30	01:11	8.0	13:32	7.8	01:51	8.4	14:13	8.18	02:33	8.4	14:57	8.1
31	01:43	8.0	14:05	7.8	02:24	8.35	14:47	8.08				

Maryport High Tides

	October				November				December			
	Morning		Afternoon		Morning		Afternoon		Morning		Afternoon	
	Time	M	Time	M	Time	M	Time	M	Time	M	Time	M
1	03:14	8.1	15:41	7.7	04:13	6.9	16:52	7.0	05:27	6.9	17:55	7.4
2	04:03	7.5	16:36	7.2	05:46	6.6	18:21	7.0	06:44	6.9	19:06	7.4
3	05:09	6.9	17:53	6.7	07:15	6.7	19:38	7.3	07:52	7.1	20:08	7.6
4	06:44	6.4	19:32	6.6	08:26	7.2	20:39	7.8	08:49	7.4	21:00	7.8
5	08:26	6.5	20:56	7.0	09:19	7.7	21:29	8.2	09:35	7.6	21:46	7.9
6	09:45	7.1	22:01	7.7	10:02	8.1	22:11	8.5	10:15	7.9	22:27	8.0
7	10:41	7.8	22:52	8.3	10:39	8.3	22:49	8.6	10:50	8.0	23:05	8.1
8	11:25	8.2	23:34	8.7	11:12	8.4	23:24	8.6	11:24	8.1	23:40	8.0
9			12:03	8.5	11:45	8.4	23:58	8.5	11:57	8.1		
10	00:12	8.9	12:38	8.6			12:16	8.3	00:15	7.9	12:29	8.0
11	00:49	9.0	13:11	8.6	00:32	8.2	12:48	8.1	00:51	7.8	13:03	7.9
12	01:23	8.8	13:43	8.5	01:07	7.9	13:21	7.85	01:27	7.5	13:40	7.7
13	01:58	8.5	14:16	8.2	01:45	7.5	13:57	7.5	02:06	7.3	14:18	7.42
14	02:33	8.1	14:49	7.8	02:24	7.1	14:38	7.1	02:48	7.0	15:02	7.1
15	03:10	7.6	15:24	7.4	03:10	6.6	15:28	6.7	03:35	6.7	15:53	6.9
16	03:49	7.0	16:06	6.9	04:10	6.2	16:38	6.3	04:32	6.4	16:54	6.7
17	04:39	6.4	17:02	6.3	05:28	5.9	18:03	6.2	05:36	6.3	18:03	6.7
18	05:50	5.9	18:31	6.0	06:52	6.1	19:17	6.5	06:46	6.5	19:09	6.8
19	07:31	5.7	20:08	6.1	07:55	6.5	20:11	7.0	07:46	6.8	20:07	7.2
20	08:58	6.1	21:17	6.6	08:44	7.0	20:57	7.5	08:41	7.3	20:59	7.6
21	09:54	6.7	22:05	7.1	09:25	7.6	21:38	7.9	09:30	7.7	21:49	8.0
22	10:33	7.2	22:42	7.7	10:03	8.0	22:16	8.3	10:16	8.2	22:37	8.3
23	11:06	7.8	23:16	8.1	10:40	8.4	22:55	8.6	11:01	8.5	23:25	8.5
24	11:38	8.2	23:49	8.4	11:18	8.7	23:36	8.7	11:47	8.7		
25			12:10	8.5	11:58	8.8			00:14	8.6	12:35	8.8
26	00:21	8.7	12:42	8.7	00:20	8.6	12:42	8.7	01:06	8.5	13:27	8.8
27	00:56	8.8	13:18	8.7	01:08	8.4	13:31	8.5	01:59	8.3	14:21	8.6
28	01:33	8.7	13:57	8.6	02:03	8.07	14:27	8.1	02:55	7.97	15:17	8.3
29	02:16	8.5	14:41	8.3	03:03	7.61	15:30	7.77	03:52	7.6	16:15	8.0
30	02:04	8.0	14:30	7.9	04:11	7.18	16:41	7.47	04:52	7.2	17:16	7.6
31	03:00	7.5	15:31	7.4					05:57	6.9	18:23	7.3

Useful Contacts

Maryport Marina

Marina Office	01900 814431
Operational Mobile	07508 544316
24hr Emergency Line	07538 237883

Emergency Contacts

Emergency Services	999
West Cumberland Hospital	01946 693181
Emergency Dentist	01228 603900
Asda Pharmacy (open late)	01900 607730
Out of Hours Medical Advice	111

Maryport Attractions

Harbourside Caravan Park	01900 814431
Lake District Coast Aquarium	01900814774
Maryport Maritime Museum	01900 813738
Senhouse Roman Museum	01900 816168
West Coast Indoor Karting	01900 816472
Wave Centre Gym, Rock Climbing & Cave Experience	01900 811450
Maryport Golf Club	01900 812605
Netherhall Sports Centre	01900 813434
Maryport Library	01900 812384

Transport

National Rail Enquiries	03457 484 950
Andy's Taxi's	07714 168005
Maryport Travel	07495 0741475
Traveline (Bus Timetables)	0871 200 2233

Places to Eat

Captain Nelson Tavern	01900 816697
Lifeboat Inn	01900 814636
Maryport Tandoori	01900 818131
Golden Lion Hotel	01900 819715
Antonio's Bar & Restaurant	01900 819715
Harbourside Cafe	01900 814774

Marine Services

H&H Services (On-site Boat Repairs & Servicing)	07733 224345
Boatwork Ltd (Mobile Yacht repairs & refits)	07970 308370
Alex Evans (Rigging)	07880 791438
Phil Evans (Rigging)	07774 167900
Gilbert Brown Transport	01539 436480
Rod Campbell Transport	016973 22248
Goacher Sails	01539 488686
Maiden Marine (Chandlers & Brokerage)	015394 88050
Nicholas George Associates (Marine Surveyor)	07557 360418
Jonathan Jackson (Surveyor)	07779011316
Bay Sea School	07721 891615



VISIT Maryport Harbour

The home of Maryport's Fishing Fleet

Wide open spaces to enjoy walking and the fresh sea air. In summer visit the old railway embankment where the Site of Special Scientific Interest is host to the small blue butterfly and rare species of plant.

There are several boats that run fishing and tourist trips; The owner of 'Venture West' operates from Elizabeth dock and can be contacted on 07713 825223.

'Este Belle,' is a smaller boat that offer trips, and operates from Maryport Marina, call 07962 118642 for information.

New for 2022, Café with views overlooking the marina. Open to the public serving a range of food and drink.



Harbour Side Caravan Site

A small friendly site next to the marina in the historic harbour town of Maryport.

Our small site is ideal for exploring Maryport and the surrounding area. All bookings and arrivals are through the marina office. The gravel pitches have an electricity point and access to water. Our recent extension in 2021, seen a new amenity block, 3 camping pods, and 18 new pitches.

Visit our website for further information www.maryportmarina.com or contact the marina office to book.

