



Maryport Marina

2023





Welcome to Maryport Marina

A small friendly 180 Berth Marina on the West Cumbrian Coast with views of the Solway Firth



Berth Holder Benefits

- | | |
|---|---|
| Free on-site car parking | Free monthly Direct Debit payment options on all annual licences |
| Free Wi-Fi | No additional charges for residential berths or wide beam vessels |
| Free slipway usage | Free yearly tide booklet |
| Free 6 months storage ashore with a standard annual pontoon licence | Free pump out facility |
| Free splicing with rope purchased | |
| Free fender inflation | |

Maryport Harbour & Marina Limited

Maryport Marina, Marine Rd, Maryport, Cumbria, CA15 8AY
01900 814431 - Enquiries@maryportmarina.com
www.maryportmarina.co.uk

Maryport Marina

Maryport Marina is an independent marina situated on the Cumbrian Coast, overlooking the Solway Firth. Maryport has fantastic views of Scotland to the West and the Lake District hills to the East. The sailing ground encompasses the Isle of Man, Scotland and North West England.

Maryport is a historic port, traditionally used for the export of coal, that has been converted to a marina to provide 180 well serviced pontoon berths, with walk ashore access. We provide a full range of marina services, including lift out and boat yard services, fuel and gas bottle sales, and most importantly great customer service.

We pride ourselves on great customer service by offering assistance to customers when leaving and returning to their berth, inspecting lines and fenders daily (especially during stormy weather), checking and adding credit to customers electricity meters and offering a friendly cheerful greeting to everyone.

Vessels in Maryport Marina have access to water and electricity on our pontoons. All of our pontoons have cast, quality cleats. Wi-Fi access is available to berth holders and visitors and can be obtained by getting a password from the marina office.

Here at Maryport Marina, we strive to maintain our facilities to the highest possible standard. In 2022, we invested in a new 40 Tonne Wise Slipway Hoist, and a major maintenance programme of the pontoon system, along with the opening of a new on-site café, to further improve the facilities available to berth holders.



Maryport Harbour & Marina is a member of the Yacht Harbour Association and continues to be the only Marina on the Cumbrian Coast to hold a 4 Golden Anchor Status



Our Team

Our office is open from 09:00 to 17:00 Monday to Friday and during the summer months 10:00 to 17:00 on Saturday and Sunday for any account queries.

Our operational staff, who are responsible for opening and closing the dock gate, lifting and boatyard services, and the inspection of pontoons and boats.

They are on site from 08:00 to 20:00 during winter and 08:00 to 22:00 during summer months, in addition they work 3 hours either side of high water during the night. They are able to sell diesel, bottle gas, or electricity once the office is closed, or deal with any urgent queries that may arise.

Our team can be contacted by email on enquiries@maryportmarina.com or by telephone on 01900 814431 or by VHF radio on Channel 12 using the callsign 'Maryport Marina.'

Meet the Team



Pauline Gorley
General Manager



Adam Lamb
Assistant Manager



Andrew Muir
Operational Staff



Gary Yule
Operational Staff



Amy Fearon
Receptionist



Emma Ogni
Receptionist



Lewis Rycroft
Operational Staff



Luke Newton
Operational Staff



Zak Alton
Receptionist



Zoe Robinson
Receptionist



Jonathan Sewell
Out of Hours Staff



Mark Willey
Out of Hours Staff



Kerry Humphries
Housekeeping Staff



Sandy Collins
Housekeeping staff

Marina Information

Pedestrian Access & Security

Access to the marina is by a key fob system which allows you access 24 hours a day. Up to 2 key fobs per boat can be issued by paying a £10.00 deposit in reception. 24/7 CCTV is in operation throughout the marina and harbour for your safety and security.

Toilets & Showers

Our toilet and shower facilities for berth holders and visitors are open 24 hours, they are cleaned regularly throughout the day and night. We have separate male, female and disabled facilities, which are all accessed by your key fob.

Car Parking

Free car parking is available on site, by providing your registration number to reception to obtain a virtual permit. All parking is at the owners risk.

Our car park is monitored by ANPR (Automatic Number Plate Recognition) cameras, therefore it is vital you register any vehicles with reception and tell us of any changes.



Trolleys

Trolleys are provided for the use of all customers and are parked against the marina fence by the pedestrian entrance. Please return the trolleys after use and do not leave on the pontoons when not in use.



Bicycles

We have a bike stand within the marina complex, therefore we politely ask that you do not leave bikes chained to any fence or gate. No bikes, skateboards or roller skates are to be used on the pontoons at any time.

Electricity

We have electricity on most of our pontoon berths and around the boat yard, these are 16 amp 230v sockets. Electricity must be purchased in advance using our smart cards, which can be loaded with any amount of credit at reception. Our smart cards are reusable, therefore a £3.00 deposit is required for each card.

Laundry Room

Our Laundry room is open 24 hours a day and has 2 washing machines, 2 driers, and an iron available for your use. These machines take £1 or 20p coins.

Our laundry room also has a refrigerator and microwave for berth holder use, along with a vending machine containing snacks and drinks.

Pets

Pets are welcome here at Maryport Marina, however we ask that dogs are kept on leads and are not allowed to foul the pontoons or marina grounds.

Internet Access

We have free WiFi in the marina building and on the pontoon system, please speak to the marina office for an access code.

Water Connections

We have a number of water taps throughout the site, on both the pontoons and boat yard. You will need to provide your own hose and connectors. Please do not leave hose pipes connected to the taps when not in use.

Boat Keys

A facility to hold boat keys for emergency purposes is available at reception. We will not issue any keys to 3rd parties or contractors unless prior written agreement has been sent to the office.

Winter

Please take care during cold and icy conditions. The walkways are salted on a regular basis, however salt is available to customers who would like to salt their pontoon.





Maryport has spectacular views over the Solway Firth and South West Scotland, an ideal base for your adventures

Marina Berthing Prices

Annual Berthing Licences

12 Month Pontoon Licence £220.00 per metre

A twelve month pontoon licence agreement that allows berthing on a pontoon berth and includes a maximum of 6 months storage ashore. Early termination is subject to our cancellation policy.

12 Month Hardstanding Licence £291.50 per metre

A twelve months storage ashore licence that allows 12 months on the hardstanding only. Early termination is subject to our cancellation policy.

12 Month Discounted Berth (A & E Pontoon) £864.00 per annum

Pontoon licence for the South side of A or E pontoon, these are for boats under 7.5m. There is no electricity or access to shower facilities or storage ashore.

Six Month Berthing Licences

Summer 6 Month Licence £137.50 per metre

6 months between 1st April & 30th September.

Winter 6 Month Licence £126.50 per metre

6 months between 1st October & 31st March.

Short Term Berthing

1 Calendar Month £25.30 per metre

Any calendar month during the year.

Leisure Visitor Berthing from £2.15 per metre

Up to 24 hours berthing for a pontoon berth or handstanding ashore.

For a full list of our services, please refer to our Marina Tarriff's.

Service Prices

Lift Package 1 for non supported vessels **£35.00 per metre**

To lift a boat that requires minimal support out of the marina, pressure wash, set down and launch at a future date or vice versa.

Lift Package 2 for supported Vessels **£38.00 per metre**

To lift a boat out of the marina, pressure wash, chock/prop and launch at a future date or vice versa. For Long, Fin or Planing Boats.

Vessel Launch from Land **£21.00 per metre**

One way lift to launch a boat, this does not include any pressure washing, any additional work will be chargeable.

Vessel Lift Out of Water **£27.00 per metre**

One way lift of a boat out of the water, this does not include any pressure washing, or chocking, any additional work will be chargeable.

Additional Services

Tow to or from Berth or Slipway **£4.00 per metre**

Towing from berth to slipway or vice versa. This is usually a side by side tow with the marina workboat or handled manually from one place to another.

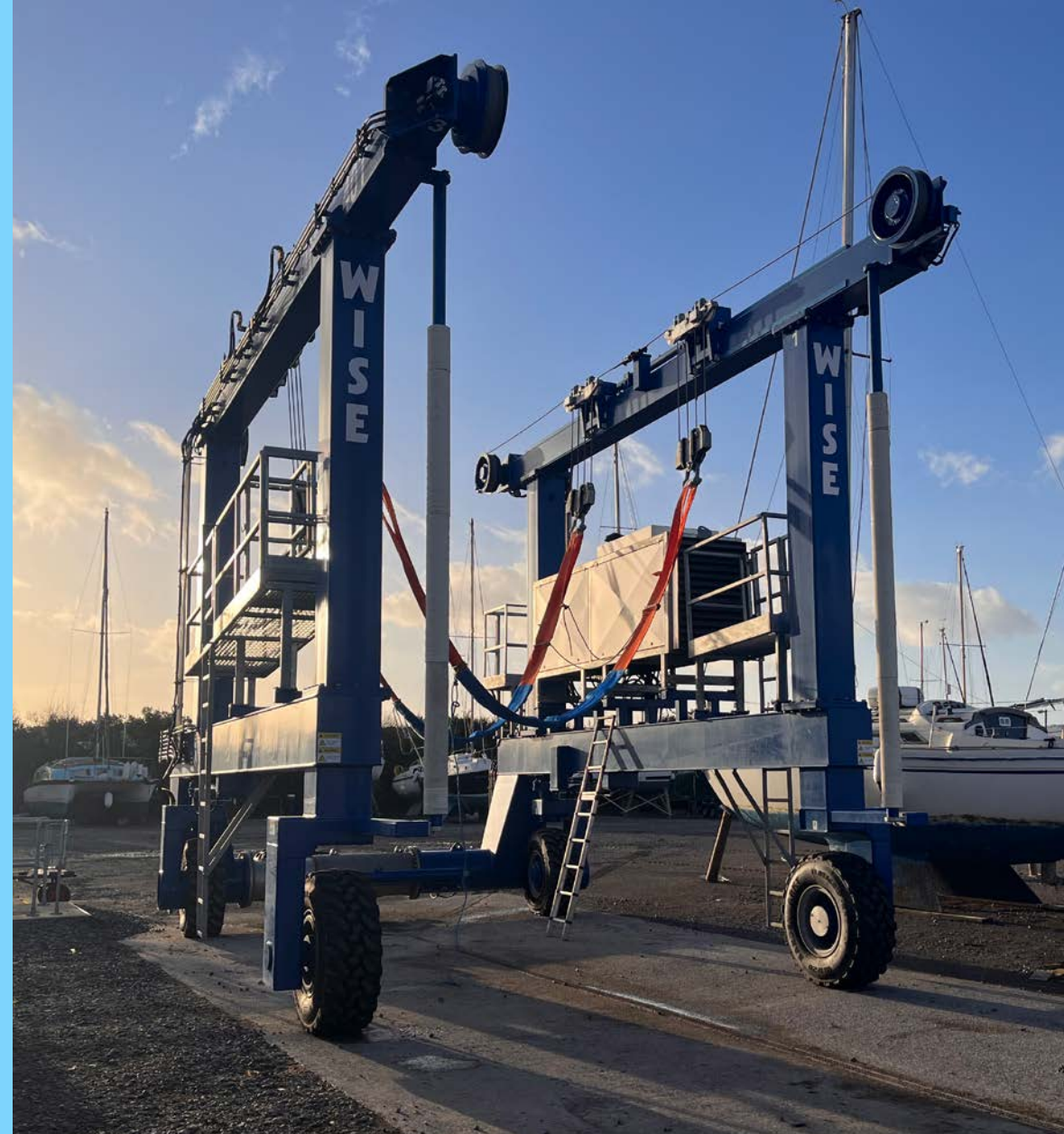
Trailer /Cradle Storage **£135.00 per annum or £20 per month**

Storage of a trailer or dismantled cradle on site, these must be labelled with your boat name for easy identification.

Small Item Storage Bin **£70.00 per annum or £8.00 per month**

Storage of small items in our customer container, one unit consists of 2 x 1 metre shelves. We have a limited number of units available.

The marina reception team can quote you for any of our berthing or servicing options, give them a call or email to discuss your requirements



Our new 40T Wise Slipway Hoist is operated Monday to Friday by our operational team who provide all of our lifting and boat yard services.

Marina Gate and Access

The access to Maryport Marina by sea is via a flap gate, whilst open the gate sits under the water on a concrete sill. The gate is operated manually when the water level is 2.4 metres above the concrete sill.

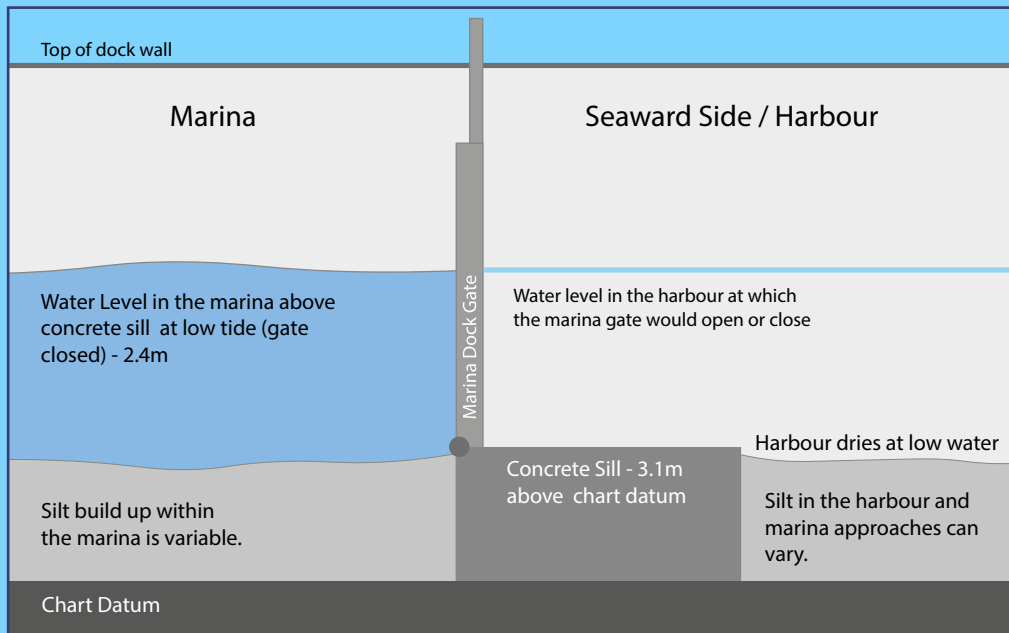
The Concrete sill is 3.1m above chart datum, this allows the gate to open between 4 to 5 hours per tide.



We recommend all vessels enter between the piers and continue on your bearing until you can see into the marina on your starboard side, and then make your turn to starboard.

All vessels are required:

- To contact 'Maryport Marina' on Channel 12 prior to any movements.
- To obey the 4 Knot speed limit
- To only enter when Green - White - Green is showing on the traffic system at the marina entrance. If red lights are showing, please do not proceed and contact a member of our team.
- Follow the directions of any marina staff or representative of Maryport Harbour Authority.



Marina Services

Fuel Berth

Diesel is available on the fuel berth at the end of Pontoon A, contact a member of the team to enquire about pricing or to dispense diesel.

As a registered dealer, we require a declaration to be signed to declare what any fuel will be used for heating and Lighting or for propulsion.

When refuelling please observe the rules to ensure safe fuel transfer:



No Smoking/ Naked Flames



No Mobile Phones/VHF's



Switch Off Engines

All refuelling must take place alongside our fuel berth.

Pump Out Facility

We have a free pump out facility for all berth holders and visitors, please speak to our operational staff. Please avoid pumping out or disposing of waste in the marina and outer harbour area.



Rope and Chandlery

We sell a range of rope for every need, such as braid on braid, 3 strand, floating rope, and shock cord. With this we also sell essentials such as fenders, anodes, shackles, oil spill kits, power cables, hoses and more in the Reception Area.



Gas Bottles

Currently we are a Calor Gas retailer meaning we can exchange a range of Calor Gas bottles and Campingaz 907 bottles. If you require a different size speak to us and we may be able to order a bottle in for you.

Weather & Tide Information

We display the current weather and tidal information on a noticeboard at the marina entrance.

Slipway

The marina slipway is available for use free of charge for all berth holders, it is used by our slipway hoist and the boat repair facility, therefore please contact us for availability.

Boat Yard Services

Slipway Hoist

Our self-propelled 40 tonne slipway hoist is operated by our trained operational staff Monday - Friday.



The maximum lifting limits for our hoist is as follows:

- Maximum weight of 20 tonne per sling
- Maximum vessel beam of 4.6 metres
- The maximum vessel draught will vary depending on the hull configuration, however the maximum practical depth of the hoist is 2.6 metres.

All lifting services are to be booked in advance with reception, a time and date will be given, however these can change if the weather or tidal conditions are not suitable, and therefore may need to be rearranged at short notice.

We ask that any sails, or covers are removed from your vessel prior to it being lifted as this may cause the vessel to become unstable whilst stored in the boat yard.

Hardstanding Storage

The hardstanding area is available for storage and minor maintenance of your vessel. Our staff check the boat yard each day to ensure any props, wedges, or supports are secure. Space is allocated on a first come first served basis.

Motor Vehicles are only allowed for loading and offloading heavy equipment. Trailers or boxes to be used as a workshop will be limited to six months and be chargeable.

The removal of props, wedges or supports under your vessel is prohibited to ensure the safety of yourself, other boat owners and staff. We ask that you familiarise yourself with the marinas rules for the boat yard before you enter the site.

The operational staff take pride in ensuring the site is free from rubbish and debris, please help them by removing any waste, paint tins, brushes, rollers, rags, fixings or wood etc. in the hedges or under your boat. Please do not secure anything to the perimeter fencing.



Be part of the Antifouling Initiative Protect, Collect & Dispose

Antifouling paint and dust is hazardous



For more information visit:

www.thegreenblue.org.uk

www.tyha.co.uk

www.safeantifouling.com

Environmental Best Practice

Protect the environment

- ✓ Choose the right paint & work in a well-ventilated area
- ✓ Protect the ground and surrounding area
- ✓ Minimise paint dust by wet sanding

Collect paint debris

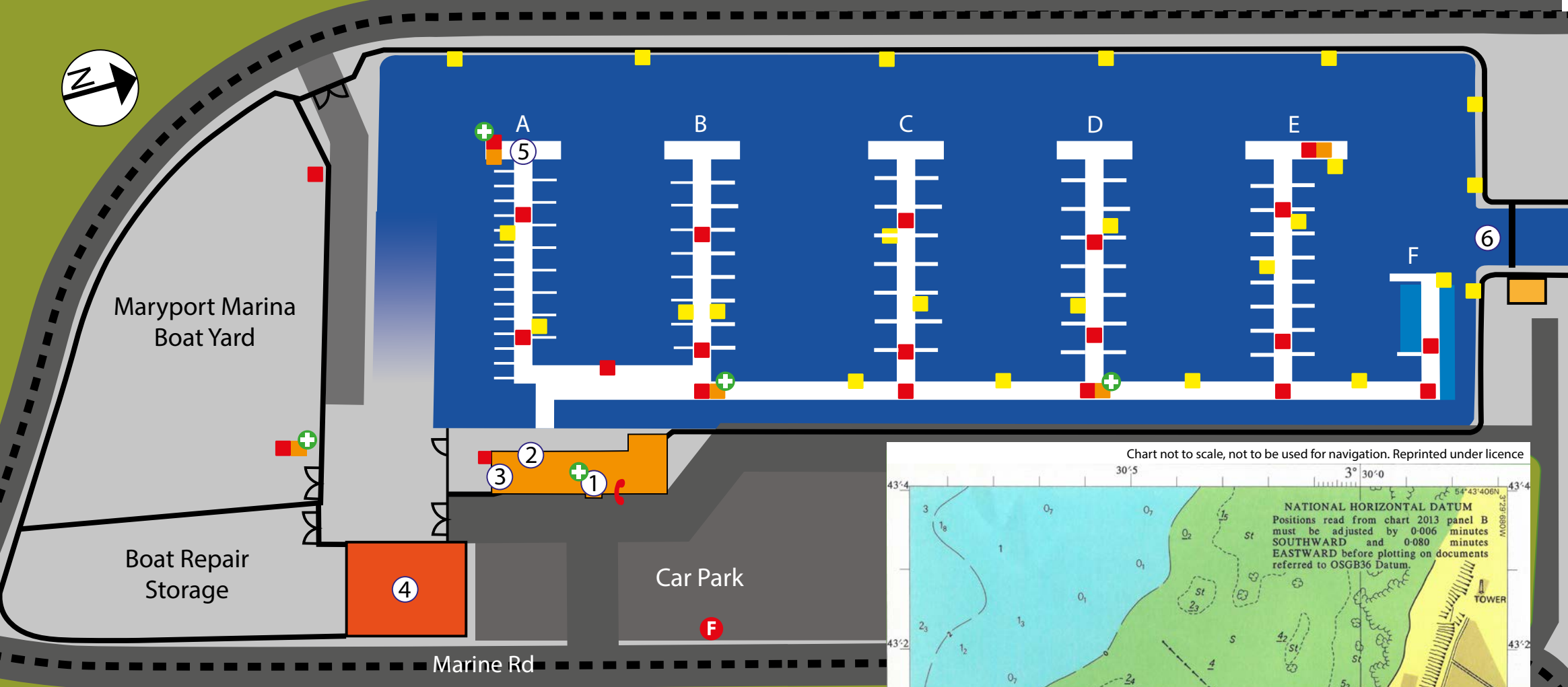
- ✓ Place tarpaulins under the vessel
- ✓ Use an industrial vacuum-cleaner linked to the paint scraper
- ✓ Capture old paint with 'paste-and-peel' techniques

Dispose of waste

- ✓ Clean up and dispose of all hazardous waste correctly

Don't forget Personal Protective Equipment (PPE)

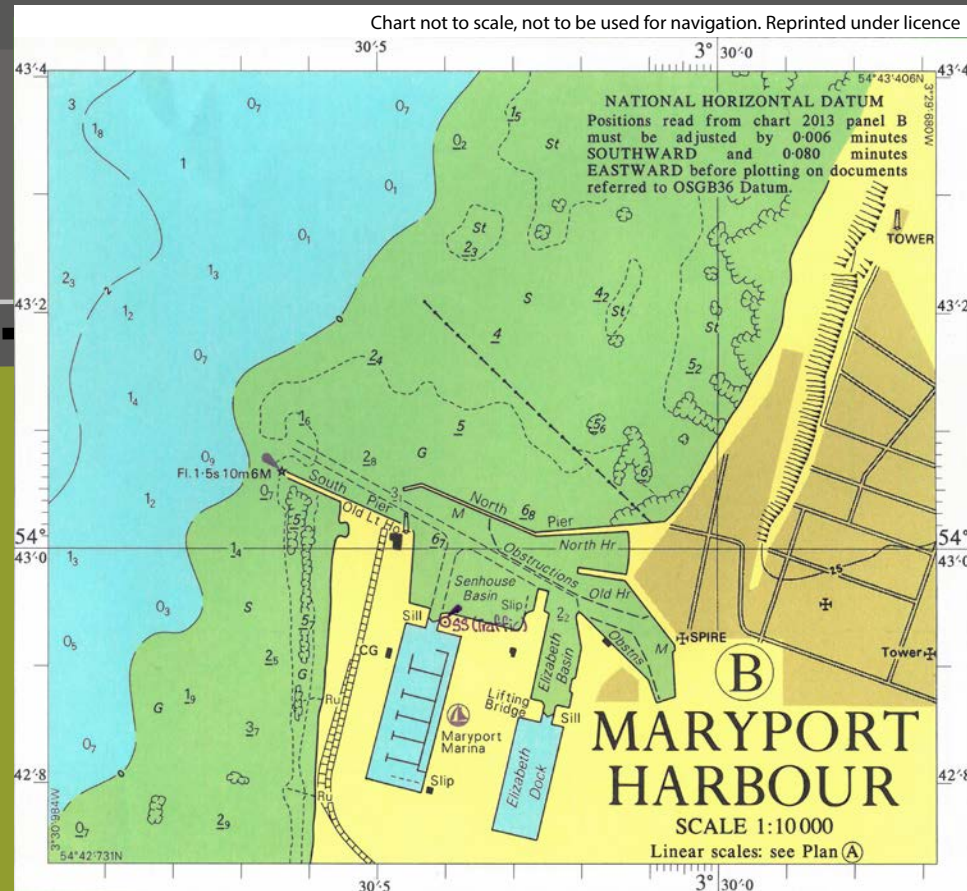




Facilities:

- 1 - Reception
- 2 - Toilet/Showers
- 3 - Laundry
- 4 - Boat Repair Facility
- 5 - Fuel Berth & Pump Out
- 6 - Dock Gate

- | | |
|---|---|
| ■ Safety Equipment
(Fire Extinguisher &
Life Ring/Throwline) | ■ Air Horn to raise an alarm |
| ■ Safety Ladders | + First Aid Kit |
| | F Fire Assembly Point |
| | ☎ Emergency Telephone |



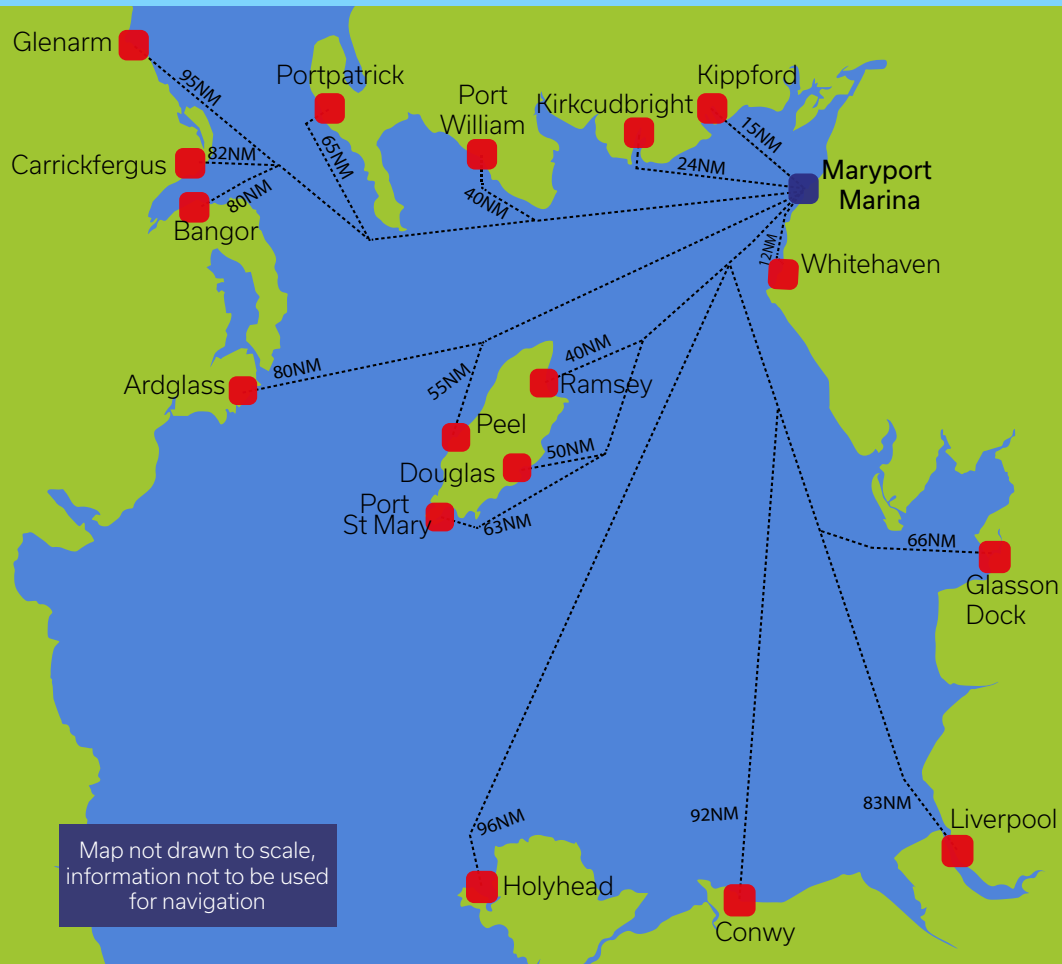
Cruising Destinations

Maryport is a great base to explore the Solway Firth and wider Irish Sea, with access to the Isle of Man, Southern Scotland, North West England and further afield, Ireland and North Wales.

A day sailing could take you across the Solway Firth to the beautiful Dumfriesshire coast to visit the towns of Kippford or Kirkcudbright, or a short sail down the West Cumbrian Coastline to Whitehaven.

For longer weekends away, a trip to the Isle of Man, is the perfect sailing destination, either call in at the historic town of Ramsey, or Port St Mary. Peel offers visitor pontoon berthing, a short distance away from the town centre.

Whether planning your day trip or your summer adventure, there is plenty of experienced sailors in Maryport who are always willing to help you plan your perfect trip.






Berth Holders

Maryport Marina has a growing network of berth holders, who love an opportunity to socialise and share experiences. In 2023, we are planning on running our first event since 2019, which will give berth holders the opportunity to meet each other.

Maryport has a yachting association, which is a great place to meet fellow berth holders, they run events throughout the year and have an equipment share scheme for members. There is now an active social media group, all ran by berth holders to chat, socialise or plan their next trip away, search 'Maryport Berth Holders Group,' on Facebook to join.

Remember to follow us on social media for any updates or information on upcoming event.

-  Maryport Marina & Harbourside Caravan Site
-  @maryportmarina
-  Maryport Harbour and Marina Limited



2023 Events

Maryport Marina is planning some great events for 2023, including an open day and boat jumble sale, and a christmas meet & greet for berth holders.

There are also plenty of events this year hosted in Maryport and the surrounding area, such as the Taste of the Sea Festival and Maryport Live, below are a few events we are aware of, however there may be more added throughout the year:

Marina Events:

17 Jun Open Day & Boat Jumble Event at Maryport Marina
Saturday 17th June 2023 - Activities dependent on weather

25 Nov Festive Meet & Greet
Saturday 25th November 2023

Events in Maryport:

tbc Jul Maryport Live - Music event hosted by bars and pubs
Date to be confirmed

12-13 Aug Taste of the Sea Festival - Harbour side food & drink festival
12th and 13th August 2023



Welcome to Maryport

Maryport has built itself a national reputation for its attractions and museums. There's more to this fishing town than meets the eye. There's a lot to do in the town and the surrounding area for history buffs, nature lovers and families looking for adventure. The history stretches back to Roman days, known then as Alauna, Maryport was one of the farthest flung outposts of the Roman Empire but strategically important because of its proximity to Hadrian's Wall.

The town of Maryport hosts many events in its calendar, including the infamous Trawler Race, an annual event which sees many of the town's fishing fleet and visitors. A popular event for locals and tourists alike, with demonstrations from Maryport Inshore Rescue, and other emergency services. Other events include, 'Maryport Live,' a weekend dedicated to free live music in the local bars and the annual Taste of The Sea Festival held on the harbour.

Maryport welcomes visitors and tourists to the small town, full of good quality restaurants, pubs and bars, along with a range of small independent shops selling everything from the essentials to DIY equipment and gift shops.



Things to Do

Explore Maryport's rich seafaring and Roman past at the Maritime Museum, or Senhouse Roman Museum, or learn more about the underwater world at the Lake District Coast Aquarium.

Cycle along the coastal path which stretches from Workington to Silloth, or why not take advantage of the Coast to Coast or Reivers cycle way?

Senhouse Roman Museum

Dramatically sited on cliffs overlooking the Solway Firth. It contains the largest collection of Roman altars from a single site in the UK. Fun and educational for adults and children the museum also has events running throughout the year. For details go to: www.senhousemuseum.co.uk



West Coast Karting

Cumbria's premier indoor karting centre. Come for an exciting spin. www.westcoastkarting.co.uk

The Wave Centre

The wave centre is home to Clip & Climb, a series of indoor climbing walls, Cave at the Wave, caving experience, and gym, next to the harbour. Find out more details at: www.better.org.uk/leisure-centre/allerdale/the-wave-centre



The Lake District Coast Aquarium

A wonderful opportunity for a closeup look at the creatures of the deep. There is crazy golf and a harbourside restaurant and gift shop plus the unique Shiver Me Timbers playground. Take a look and book your tickets at: www.coastaquarium.co.uk



Food & Drink

Maryport has a wide variety of places to eat and drink, for any occasion. Many of the bars and restaurants are within a short 5 to 10 minute walk from the marina



Marina View Cafe

On site, Marina View Cafe, opened its doors in April 2022, serving a wide selection of tasty treats and hot drinks, and now for 2023 they are serving a selection of alcoholic beverages, perfect for those sunny summer days on the patio overlooking the marina.

Marina View Cafe is open 7 days a week, 08:30 - 16:00, Monday to Saturday, and 09:00 - 16:00 on Sundays.

Lifeboat Inn

The lifeboat Inn, located on Shipping Brow, a short walk from the harbour is a favourite for traditional pub food, serving a great selection of food and drinks. Famous locally for its Sunday Carvery served 11:30 to 15:00.



Cross Quays Fish & Chip Takeaway

Cross Quays, is a fish and chip shop, located on the harbour, serving a good selection of fried fish, meat or vegetarian options.



Goldon Lion Bar & Hotel

The Goldon Lion is a hotel, bar and restaurant serving a wide selection of food and beverages, located on Shipping Brow looking over the harbour entrance.

Maryport Tandoori

Maryport Tandoori is a popular indian restaurant and takeaway near the harbour, and is extremely popular with the locals.

Health & Safety

Maryport Harbour and Marina Limited in conjunction with the Harbour Authority takes its duty under the Health and Safety at Work Act 1974 etc, very seriously. Our aim is to provide a safe working environment for all its staff, customers and visitors alike. Therefore, we ask all our customers and visitors to adhere to the company's recommendations, guidance and direction, to ensure the safety of all persons and property, whilst enjoying their leisure time.

In addition to the HSE regulations, the Maritime and Coastguard Agency has powers for all marine activities under the Coastguard Act 1924, Merchant Shipping Act 1995 and Maritime Security Act 1997. The MCA requests that all Harbours, terminals, Marinas, etc. adhere to the Port Marine Safety Code.

HSE Inspectors work in conjunction with the Marine Accident Investigation Branch (MAIB), both organisations have the authority to investigate incidents. Generally, the HSE will pass any marine incidents to the MAIB for investigation, reporting and recommendations.

We request that all persons coming to site familiarise themselves with the safety equipment around the site, especially the pontoon system. There is a plan of the site showing the locations of safety ladders, fire extinguishers, life rings or throw lines,

first aid kits, etc. These are located at the entrance of the pedestrian gate to the site, the entrance of the pontoon system and a small plan in this booklet.

Private individuals carrying out minor works or maintenance on their boats will generally create only minor risks to themselves. However, when our staff become aware that boat owners are putting themselves or others at unnecessary risk, our staff will approach the individuals and inform them that these works are not acceptable.

Persons other than boat owners, i.e. Individuals, companies, and/or sole traders undertaking work on the site, boats, and property will be required to complete a 'Control and Permission of Third-Party Access' form. If this is not completed appropriately, we reserve the right to refuse entry. We have a system for contractors to have an annual review, please speak to the management team for further information.

Friends, visitors and contractors must sign in at reception prior to entering the site, this information is required as part of our emergency planning. Anyone found on site who hasn't signed in at reception will be asked to leave the site.

We appreciate your co-operation to ensure our site is safe and secure for everyone.

Accident Reporting

As part of the Health and Safety, it is important for our statistics that accidents and/or near misses are reported as soon as practicable. The staff will complete or provide a form for you to complete and hand back into the office. It is important that you provide as much detail as possible to enable us to act, where necessary.

Life Jackets or Buoyancy Aids

Children, youths or vulnerable people should always be accompanied by an adult whilst on site, especially the pontoon system and boat storage area. Whilst on the pontoon system, buoyancy aids or lifejackets should be worn by children, youths and non-swimmers. During periods of inclement weather, it is recommended that all person use a buoyancy aid or life jacket.

Mooring

Moorings should be clear of debris, dinghies or tenders. Trolleys should be emptied and returned to the patio area as soon as possible, for other customers. It is recommended that boats should have a stern, bow and spring line to the pontoon system. Mooring lines should not cross to another berth, as this prevents the berth being used and creates a hazard, especially at night-time if we have visiting boats.

Boat Yard

Please beware that plant and machinery operate in and around the boat yard. It is recommended that all person's keep a safe distance from machinery and wait until the operator has completed their manoeuvres or operation before approaching. Adhere to the safety signage around the site and keep to the designated footpaths.

Trips, Slips and Falls

We ask that particular care, is taken on the pontoons system during icy or wet weather, as it may be slippery at these times. Avoid running or jumping on the pontoons as this causes a springboard effect. We ask that appropriate footwear is always worn around the pontoon system and especially on the hard-standing storage area, where it is very industrial. Everyone has a duty of care to prevent a hazard, please ensure you do not cause a trip, slip or fall.



Health & Safety

Electricity

The bollards are tested annually by a competent electrical company. If you are plugging into our system, we expect your cable to be fit for purpose. Any cables or plugs that are damaged or not fit for purpose will be removed from our system. Please remember to disconnect your lead before leaving your berth.

Carbon Monoxide Safety

Proper ventilation for engine, generator or heating exhaust must be clear. Equipment should be properly maintained following manufacturer's instructions for servicing. It is recommended to install a CO alarm inside your boat, and test on a regular basis.

Fire Safety

Fire extinguishers are available on the pontoons located in the red fire boxes. We recommend that minimum amounts of fuel, gas, etc. are kept on board, and that you isolate any fuel or gas before leaving your boat. Please ensure you have a working fire alarm on board.

Any flares that are kept on board should be in a suitable container, designed for holding flares. We also prohibit the storage of expired flares on board, please dispose of them appropriately.

Fire Safety Procedure

In an emergency, raise the alarm and follow our fire safety procedure:

- Call 999, our address is: Maryport Marina, Marine Rd, Maryport. CA15 8AY
- Clear the area of people who may be in danger, and retreat to the fire assembly point in the car park.
- Fire extinguishers are available throughout site, however only attempt to tackle the fire if you are appropriately trained, and it is safe to do so.
- Do not obstruct the access routes into the marina, as the emergency services and marina staff will require access.
- If you are unable to leave the pontoons, make your way to the farthest point possible from the incident and arrangement will be made for a water evacuation.

The building fire alarm is a siren, which is tested weekly by the operational staff. Fog horns are available in the red emergency cabinets on the pontoons and hardstanding to help raise an alarm. We will transmit any instructions on VHF Channel 12.



Lifeboats

I am your Lifejacket

When we are near the water,
I will make you feel safe.
And when we are in the water,
I will keep you alive.
I will stop you from panicking.
I will keep you afloat.
Even in rough weather.
Even if you are unconscious,
I will support and protect you
Until help arrives.
All this I will do for you
If you do two things for me
Look after me and put me on.

**USELESS
UNLESS
WORN**



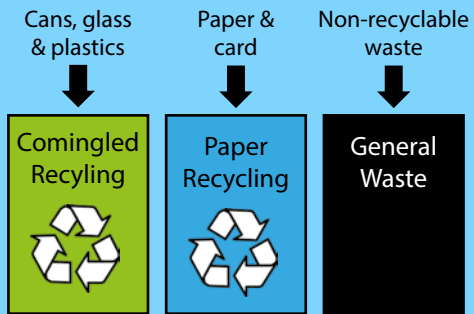
Environment

Here at Maryport Marina, we take all precautions to protect the environment from unnecessary harm. Please take time to read the following guidance.

Waste Facilities

We provide the following bins, 3 general waste bins, 1 co-mingled recycling bin (cans, glass, & plastic) & 1 paper & card recycling bin.

We also have waste facilities for waste oil, batteries and scrap metal, please contact a member of staff to arrange. Any other waste can be disposed at the local public amenity around a 2 minute drive from the marina, speak to marina staff for directions.



Please ensure that anti-fouling scrapings are swept up from the boat yard and disposed of in a safe manner, preventing contaminants from entering the water system.

Where possible use products that are biodegradable, phosphate and chlorine free.

Please do not use your sea toilets in the marina or harbour. A sewage pump out facility is available on the fuel berth on pontoon A, please speak to a member staff to operate.

Pollution

Please keep noise to a minimum, roaring engines, flapping halyards, or loud music can disturb other users of the marina and residents. We would appreciate your halyards being secured before leaving your vessel for any length of time. This also helps to reduce the wear & tear on your ropes.

Polluting the water, with fuel or oil drips can have a serious cumulative effect on the marine environment. If using portable fuel containers, please fill them away from the waters edge. Please ensure you use absorbent material under the containers to collect any spilt fuel, and do not over fill your tanks. Please ensure you dispose of all waste in a safe and appropriate manner. If you notice any pollution especially oils, please report it to marina staff as soon as possible,



Marina Life

The Solway Coast area from Maryport to Rockcliffe in the north was designated in 1964 as a Area of Outstanding Natural Beauty. The area covers about 115 square kilometers of the Solway Plain and its primary purpose is to conserve and enhance the natural beauty.



Maryport also has a Site of Special Scientific Interest (SSSI), Which is located on the grass bank adjacent to the marina, and has a variety of grasses, with two Cumbrian rarities' the Common Broomrape and the Pyramidal Orchid. The SSSI extends round to the east of the harbour ending at the road known as Irish Street. This sheltered land includes species such as Rest-Harrow, Common Knapweed, Kidney Vetch, Wild Carrot, Wild Mignonette, Yellow Rattle and Yarrow.



The Yarrow is present throughout the area and it is upon this plant the nationally rare Purple Broomrape is parasitic. Maryport is the most northern known site for this species, which otherwise is a southern plant.

The Site is also important for the Small Blue Butterfly due to the abundance of its food plant, the Kidney Vetch. The small blue has suffered a decline in several parts of the country and in Cumbria is restricted to 3 sites.



The marina is full of wildlife, including Swans, Seals, Otters, King Fishers, a variety of birds and fish, and one that everyone loves to watch in the summer months is Mullet.



Harbour Side Caravan Site

01900 814431 enquiries@maryportmarina.com

Harbour Side Caravan Site is ideally located for exploring the seaside town of Maryport and the local area with great views of Maryport marina and the Solway Firth.

All of our pitches have electricity hook up and water stand, access to our clean and modern toilet facilities.

We also offer 3 Camping Pods which include a double bed, a seating area which can turn into a small bed, tea and coffee facilities, microwave and a fridge.



Useful Contacts

Maryport Marina

Marina Office	01900 814431
Operational Mobile	07508 544316
24hr Emergency Line	07538 237883

Emergency Contacts

Emergency Services	999
West Cumberland Hospital	01946 693181
Emergency Dentist	01228 603900
Asda Pharmacy (open late)	01900 607730
Out of Hours Medical Advice	111

Maryport Attractions

Harbourside Caravan Park	01900 814431
Lake District Coast Aquarium	01900814774
Senhouse Roman Museum	01900 816168
West Coast Indoor Karting	01900 816472
Wave Centre Gym, Rock Climbing & Cave Experience	01900 811450
Maryport Golf Club	01900 812605
Netherhall Sports Centre	01900 813434
Maryport Library	01900 812384

Transport

National Rail Enquiries	03457 484 950
Andy's Taxi's	07714 168005
Maryport Travel	07495 0741475
Traveline (Bus Timetables)	0871 200 2233

Places to Eat

Lifeboat Inn	01900 814636
Maryport Tandoori	01900 818131
Golden Lion Hotel	01900 819715
Wong's Chinese Takeaway	01900 819333

Marine Services

H&H Services (On-site Boat Repairs & Servicing)	07733 224345
Boatwork Ltd (Mobile Yacht repairs & refits)	07970 308370
Alex Evans (Rigging)	07880 791438
Phil Evans (Rigging)	07774 167900
Gilbert Brown Transport	01539 436480
Rod Campbell Transport	016973 22248
Goacher Sails	01539 488686
Maiden Marine (Chandlers & Brokerage)	015394 88050
Nicholas George Associates (Marine Surveyor)	07557 360418
Jonathan Jackson (Surveyor)	07779011316
Bay Sea School	07721 891615



Book Now At:
maryportmarina.co.uk/caravan-site

Marina View CAFE

OPEN 7 DAYS A WEEK

Monday to Saturday

8:30 - 16:00

Sundays

9:00 - 16:00

Delicious Breakfast, and Lunch
Freshly Roasted Coffee
Homemade Cakes & Light Bites
English Lakes Luxury Ice Cream
Stunning views of Maryport Marina



Marina View Cafe, Marina Rd, Maryport, CA15 8AY